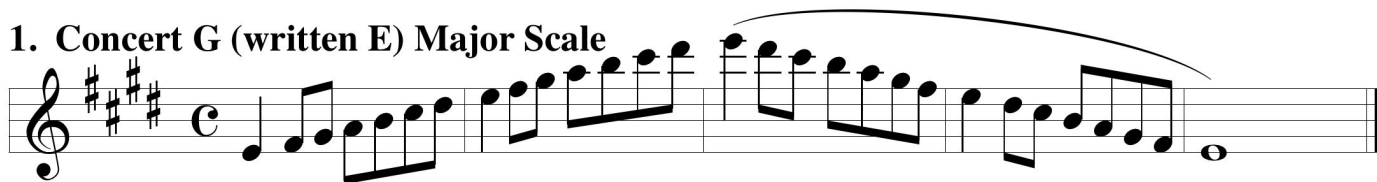


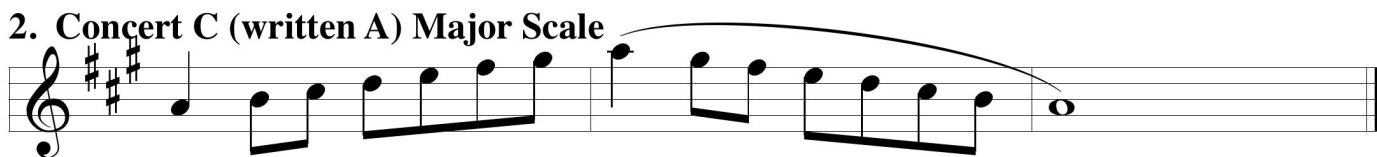
# ATSSB E $\flat$ Alto & Baritone Saxophone Scales

Scales should be performed as written. Scales may or may not be performed connected. All scales are to be played at a minimum of  $\text{♩} = 120$

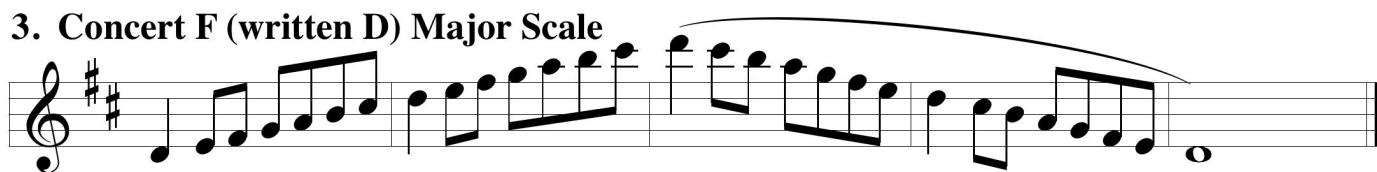
## 1. Concert G (written E) Major Scale



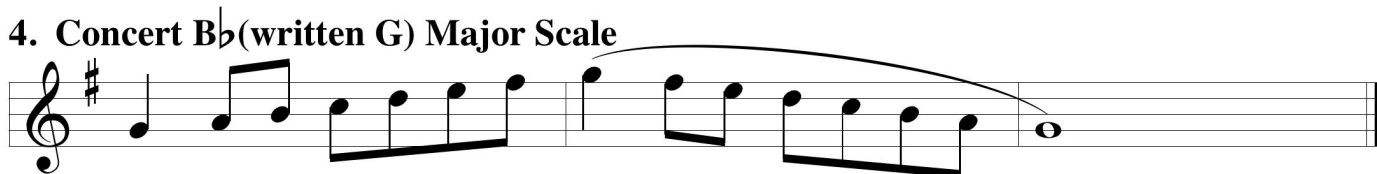
## 2. Concert C (written A) Major Scale



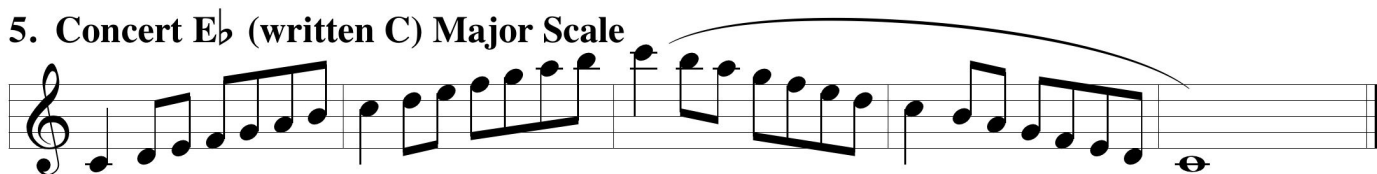
## 3. Concert F (written D) Major Scale



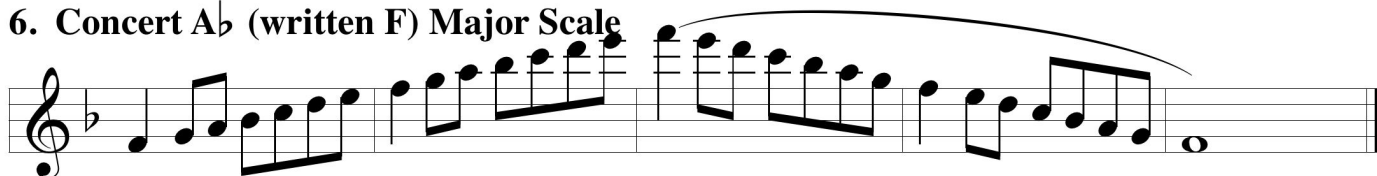
## 4. Concert B $\flat$ (written G) Major Scale



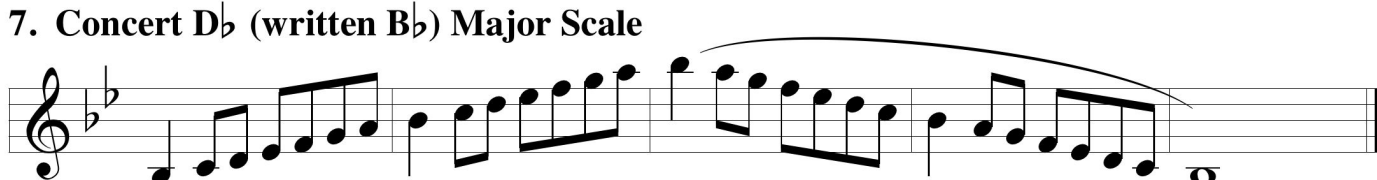
## 5. Concert E $\flat$ (written C) Major Scale



## 6. Concert A $\flat$ (written F) Major Scale



## 7. Concert D $\flat$ (written B $\flat$ ) Major Scale



## 8. Chromatic Scale

