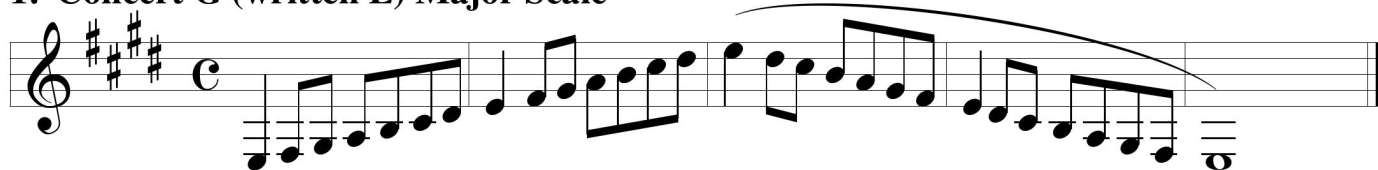


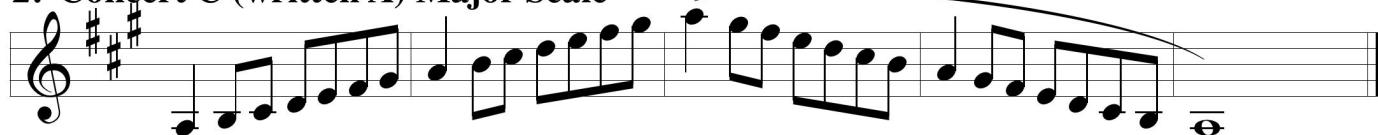
ATSSB E^b Alto & Contra Clarinet Scales

Scales should be performed as written. Scales may or may not be performed connected. All scales are to be played at a minimum of $\text{♩} = 120$

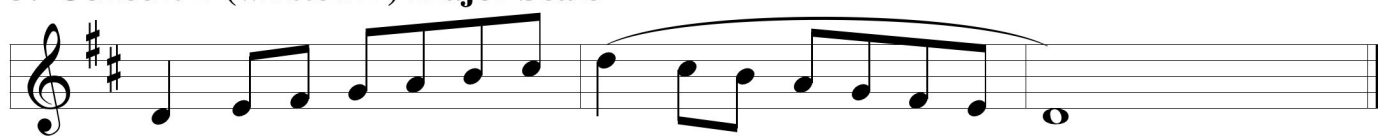
1. Concert G (written E) Major Scale



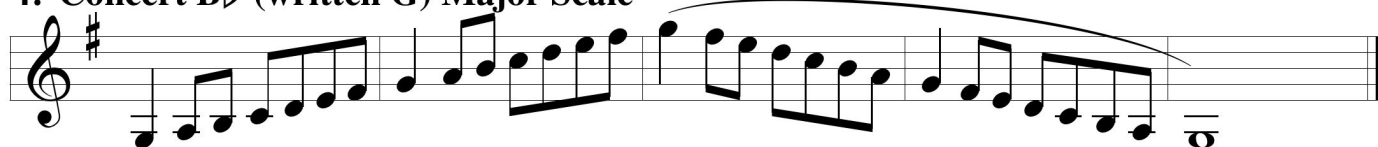
2. Concert C (written A) Major Scale



3. Concert F (written D) Major Scale



4. Concert B^b (written G) Major Scale



5. Concert E^b (written C) Major Scale



6. Concert A^b (written F) Major Scale



7. Concert D^b (written Bb) Major Scale



8. Chromatic Scale

