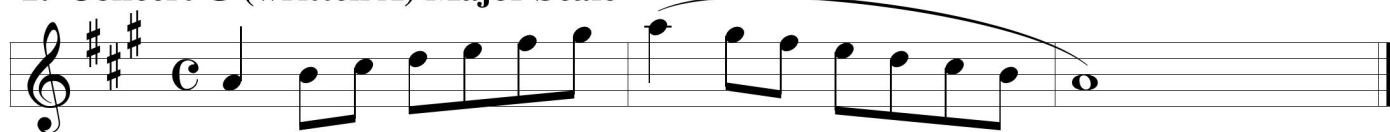


1. Concert G (written A) Major Scale



The first staff of music shows the beginning of the scale. It starts with a treble clef and a key signature of one sharp (F#). The melody begins on D4 (F#4) and ascends through E4, F#4, G#4, A4, B4, and C5. The notation includes eighth and sixteenth notes, with a final C5 marked with a fermata.

The first staff of music is in treble clef with a key signature of one flat (B-flat). It contains a melody of eighth and sixteenth notes, starting on a whole note G4 and ending with a half note G4.